

Scheda Prodotto  
Product Sheet

# Isabelle - chair

Designer T.S.P.  
Produzione / Production year: 2018



# Descrizione

Una sedia come un piccolo racconto femminile: discreta e raffinata, calma e semplice. Una cover tonda accentuata dalla sartorialità del tessuto, velluto in esterno e jacquard boucle all'interno. Completamente sfoderabile.

## **Struttura - Imbottitura**

In legno di betulla multistrato curvato con poliuretano espanso 30IP rivestito con fibra poliestere 100 gr/mq.

Cuscino seduta realizzato con poliuretano espanso a quote differenziate (40IP – 30IP) rivestito in fibra di poliestere 100 gr/mq.

## **Piedini**

In ferro verniciato o cromato dal diametro 18 mm.

# Description

A whimsical, feminine seat: discreet and refined, calm and simple. The rounded shape is accentuated by the sumptuous fabric, velvet on the outside and boucle jacquard on the inside. Fully removable covers.

## **Structure - Padding**

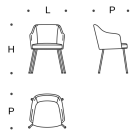
In plywood curved birch with polyurethane foam 30IP covered with polyester fiber 100 gr/sqm.

Seat cushion made with variable-density polyurethane foam (40IP – 30IP) covered with polyester fiber 100 gr/sqm.

## **Feet**

In 18 mm of diameter painted or chromed iron.

Sedia  
Chair



L = 60 cm  
P = 55 cm  
H = 78 cm

## **Gambe / Legs**



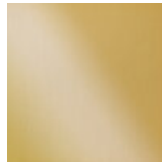
Nero RAL 9005  
Black RAL 9005



Cromo lucido  
Glossy chrome



Black nickel  
Black nickel



Ottone satinato  
Satin brass